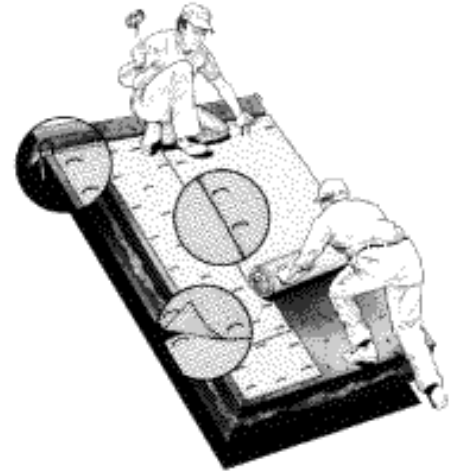


Indian Valley Industries, Inc.

IVI-Jute Mesh Installation Guidelines

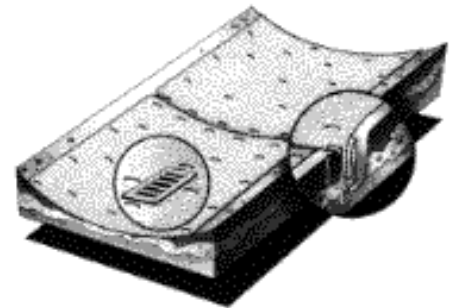
BASIC INSTALLATION GUIDELINES

1. Prepare the soil by grading or raking area free of clods and large stones. Do not compact, if using fertilizer, add it to soil before grading.
2. Seeds and mulch (if required) should be distributed evenly over the prepared soil.
3. Jute Mesh should be applied by unrolling down the slope or in the direction of water flow.
4. Secure Jute Mesh at the top of the slope by toeing it in 6" deep. Reinforce with a row of at least five (5) staples, spacing each about a foot apart, and covering with soil.
5. Place staples 18" to 24" apart throughout to secure matting to ground. All staples must be driven flush with soil surface.
6. Always overlap the edges 2" to 6". At the end of each roll, fold back 4" to 8" of the matting. Overlap this 4" to 8" over the start of the next roll. Securely staple the two layers to the ground.



WATERWAY INSTALLATION

1. Always lay jute in the direction of water flow.
2. Extra staples are needed in waterways. Staples must be driven flush with soil surface.
3. Check slots should be placed every 25' to 50', depending on the velocity of the water flow. A row of staples should be placed on either side of the check slot.



HELPFUL HINTS

1. Keep in dry storage
2. Remember to lay Jute Mesh loosely; DO NOT STRETCH!
3. Check slots may be needed on steep slopes to prevent subsurface movement of soil during prolonged or heavy rains.

TO ESTABLISH A CHECK SLOT:

1. Dig 6" deep trench perpendicular to water flow.
2. Roll Jute Mesh in two or three folds (see diagram) and set into trench.
3. Staple fabric securely in bottom of trench and continue rolling downhill.

Because Jute Mesh has 60 to 65% of open area, additional seed can be broadcast over the matting to cover bare spots that may appear due to improper seeding or poor germination.

Recommended usage: Approximately 200 staples per 100 sq. yds.